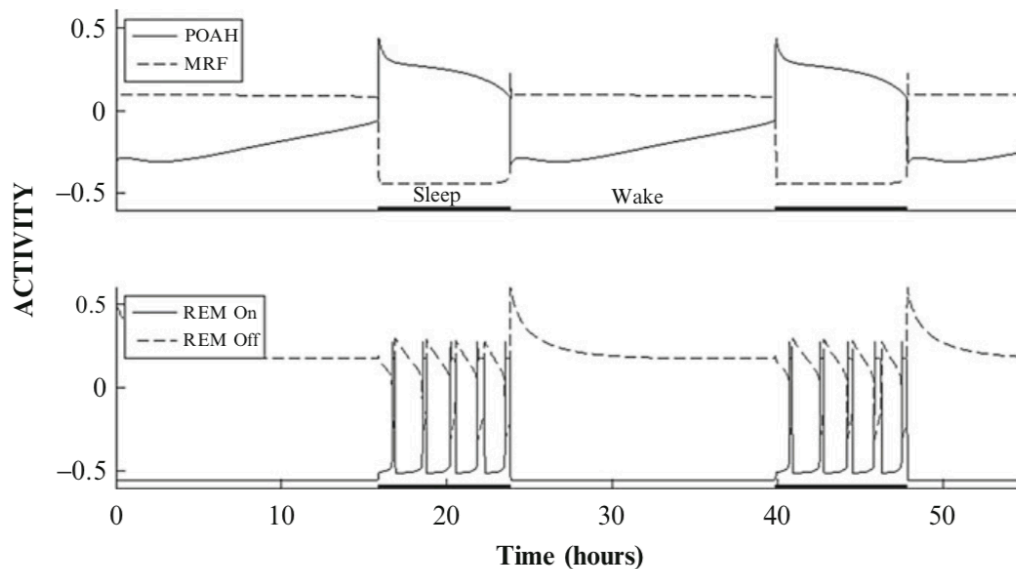


Graduate Mathematics Seminar

Mathematical Modeling in Sleep Dynamics and Epidemiology

Dr. Selenne Bañuelos

California State University Channel Islands



Abstract: Nonlinear dynamics has helped us understand the complex behavior of many biological systems. Combined with tools from dynamical systems and mathematical modeling, it has aided us in gaining insights in the areas of neuroscience, epidemiology, and population dynamics. This talk will present collaborative work with biologists and mathematicians in different sub-disciplines. I will present a continuous and deterministic mathematical model on the effects of temperature on human sleep patterns and a model on the spread of ZIKAV.

When: Monday, November 4, 2019, 6:00 – 7:00 pm

Where: CSUCI, Sierra Hall 2411

One University Drive, Camarillo, California 93012-8599 Tel: (805) 437-8967 Fax: (805) 437-8864 www.csuci.edu