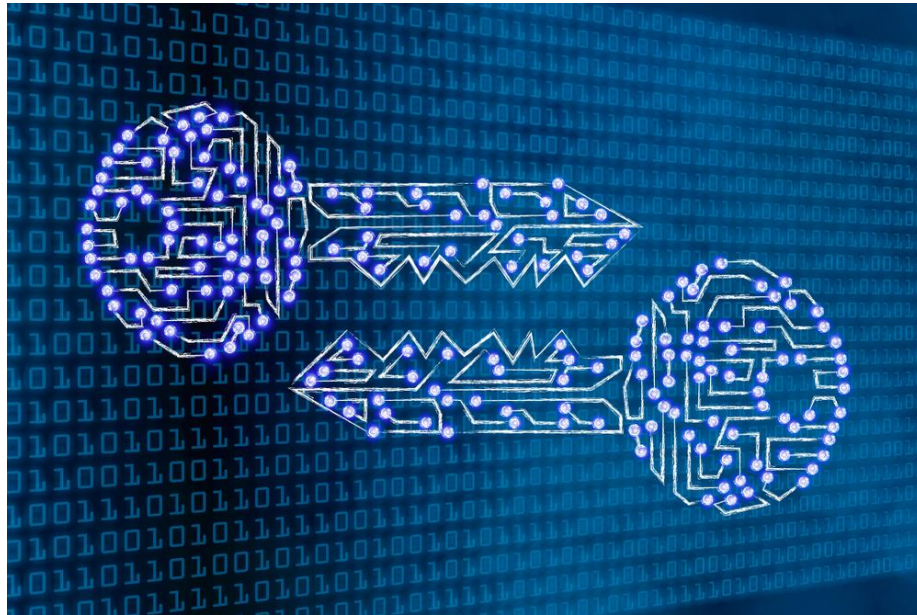


## *Graduate Mathematics Seminar*

Private Set Intersection and its Relevance in Big Tech Today

**Mollie Zechlin**

*Spring Labs*



**Abstract:** Private Set Intersection (PSI) is a cryptographic technique in which two actors want to determine what the intersection of their sets are without revealing the elements they do not have in common. This talk will introduce how this may be solved for, related problem sets, and how they relate to what Big Tech is solving for and implementing today. We will be focusing on how elliptic curves are utilized in this type protocol (such as Google's Private Join and Compute), and how they compare to some of the other proposed solutions.

*When:* Monday, October 11th, 2021, 6:00 – 7:00 pm

*Where:* Zoom

One University Drive, Camarillo, California 93012-8599 Tel: (805) 437-8967 Fax: (805) 437-8864 [www.csuci.edu](http://www.csuci.edu)